

ASSESSOR REFERENCE CARD

SLAUGHTER SHEEP *(Current as at January 2020)*

STOCK CATEGORY

Suckers	Unweaned lambs	No permanent incisors
Lambs	Weaned lambs	No permanent incisors in wear
Hoggets	Any sex	Up to 2 permanent incisors
Ewes	Females	
Ewes & Lambs	Females with lambs at foot	
Wethers	Castrated males	
Ewes & Wethers	Mixed sex	1 or more permanent incisors
Rams	Entire males	
Goats	Any age, any sex	

BREED COMPOSITION

Description	Sire	Dam
Pure	Merino	Merino
1st Cross	Border Leicester	Merino
2nd Cross	Poll Dorset	Border/Merino
Other	Dorper	F3 Dorper

STOCK HISTORY

Vendor Bred— yes or no?
If no—where & when were stock purchased, how long on property.

GRAZING CONDITIONS

Nominate prior to and following assessment.

CARCASE QUALITY GRADE

ETQ	Excellent/top quality
GAQ	Good average quality
FAQ	Fair average quality
PLQ	Plain quality

DRESSING % GUIDELINES

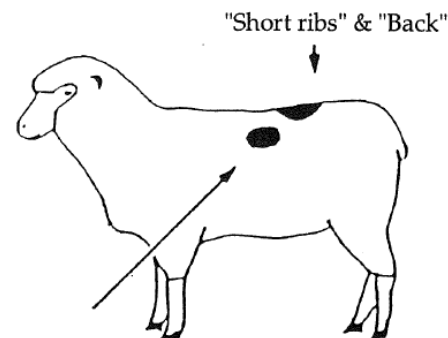
% guidelines based on 3 hours off feed, bare shorn & not preg.
NO SKIN—Standard Aus-Meat Carcase

Fat Score	Lambs (X/B)	Ewes	Wethers
1	41%	37%	39%
2	43%	40%	41%
3	46%	42%	43%
4	48%	44%	45%
5	49%	46%	47%

Note: Adjust above + or - for seasonal/feed conditions, time off feed, breed, skins (shorn, woolly, wet, dry), pregnancy

FAT SCORES

1	0-5 mm
2	6-10 mm
3	11-15 mm
4	16-20 mm
5	21 mm and above

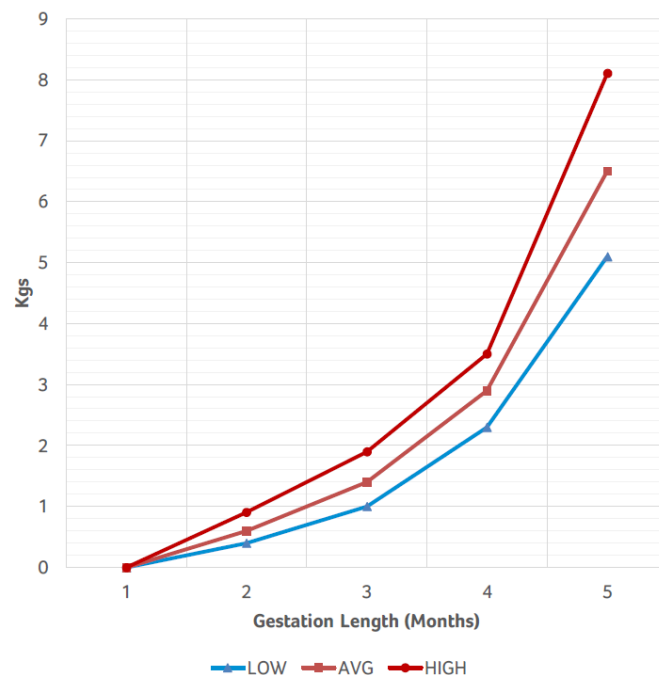


STANDARD DRESSED WEIGHT RANGES

Class	Weight kg	Class	Weight kg
8	Below 8	20	18-20
10	8-10	22	20-22
12	10-12	24	22-24
14	12-14	26	24-26
16	14-16	28	Over 26
18	16-18		

FOETAL GROWTH WEIGHTS

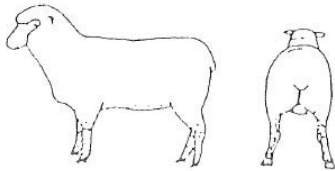
ESTIMATED SHEEP FOETAL GROWTH WEIGHTS



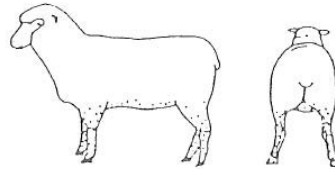
BURR & SEED - identification points & coverage

- | | |
|----------------------------|---------------------|
| 1. Brisket, Shoulder, Neck | 3. Hind Leg, Breech |
| 2. Lower Rib, Belly | 4. Head |

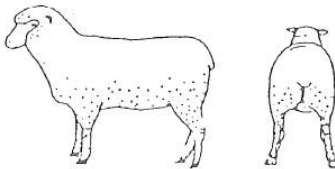
Very Light



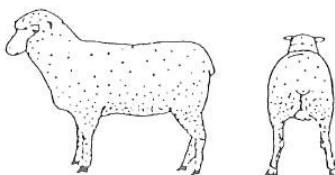
Light



Medium



Heavy



Note: These standards apply in all areas.

SKIN LENGTH

Inches	MM
0.0 - 0.25	0 - 0.5
0.25 - 0.5	6 - 13
0.5 - 1.0	14 - 25
1.0 - 1.5	26 - 38
1.5 - 2.0	39 - 51
2.0 - 2.5	52 - 64
2.5 - 3.0	65 - 76
3.0+	77+

Measure mid back position.

Note: Skins are usually traded in imperial measurements, not metric.

NOTES

GENERAL SKIN/WOOL COMMENT

- | | |
|--------------|----------------|
| Shearing | Flystrike |
| Wool Quality | Coloured sheep |
| Ribbing | Dermatitis |

ASSESSOR COMMENTS

Assessor Comments are the one area of the assessment that varies depending on the target market. They are an opportunity to provide objective comments & further details on specific areas such as:

- Carcase Quality
- Breeding
- Weight
- Muscling
- Fat Distribution
- Trade/Export Suitability

LIVE WEIGHING

1. Test scales for accuracy prior to every assessment.
2. Record weights of a representative sample:
Recommended minimum of: 20% of the whole lot
3. Record time off feed and water

LIVEWEIGHT GAIN OR LOSS

Enter anticipated weight gain or loss following delivery, in kg/day.

Consideration factors: Grazing Conditions & Nutrition, Age & Weight, Weaning, Sex, Disease, Weather, Pregnancy, Evidence of Performance etc.

DELIVERY ADJUSTMENT %

Adjustment % required to allow for a curfewed weight at delivery when this varies from hours off feed at assessment.