

ASSESSOR REFERENCE CARD

STORE CATTLE *(Current as at January 2020)*

STOCK CATEGORY

Stock Category	Dentition/Comments
Calf	Any sex
Vealer	Any sex. Still on cow until delivery, no permanent incisors Use for Slaughter Stock.
Weaner	Any sex. No permanent incisors, further defined as Weaned or Unweaned. Use for Store Stock
Yearling	Any sex. No permanent incisors
Steer	Castrated male, 1 or more permanent incisors
Heifer	Female, 1 but no more than 7 permanent incisors
Steers & Heifers	Mixed sex, 1 or more permanent incisors
Cow	Female, 8 permanent incisors
Cows & Calves	Females with calves at foot
Bull	Entire Male, 1 or more permanent incisors
<i>Note: Use the Stock Category appropriate for the oldest cattle in the lot</i>	

Note: When using dressed weight use 20kg increments with 40kg increments for liveweight

STANDARD LIVELWEIGHT WEIGHT RANGES

Class	Weight kg	Class	Weight kg
4	Below 80	24	440-480
7	80-140	26	480-520
9	140-180	28	520-560
11	180-220	30	560-600
13	220-260	32	600-640
15	260-300	34	640-680
16*	300-320	36	680-720
18	320-360	38	720-760
20	360-400	40	760-800
22	400-440	42	Over 800

**Note: Weight Class (16) 20kg only*

TEMPERAMENT

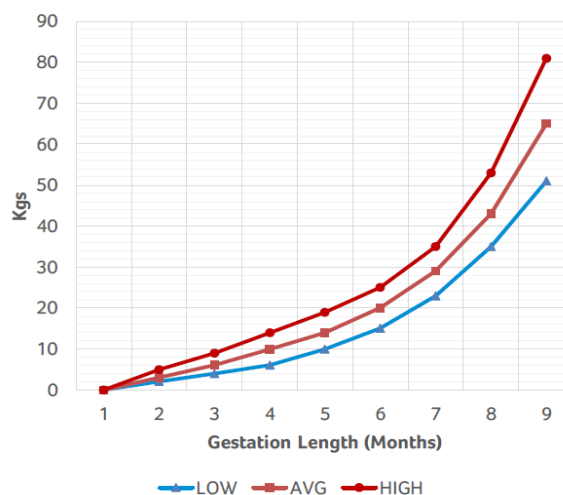
To be assessed in the;
Yards, Crush & Paddock

**Enter as number of head.
See page 6 of Cattle Assessment Form
for full details.*

Docile	Settled and somewhat dull disposition. Cattle easily handled individually.
Quiet	Displaying a quiet & calm disposition. Handler in control at all times. May exhibit some stubbornness.
Slightly Stirry	Manageable but impatient. Clear signs of eagerness to return to mob. Reluctant to stand quietly; exits briskly.
Stirry	Out of control and jumpy. Large flight distance. Continuous tail flicking & bellowing in crush.
Aggressive	Aggressive behaviour, fearful, extreme agitation. May exhibit attack behaviour when handled alone. Exits crush frantically.

FOETAL GROWTH WEIGHTS

ESTIMATED CATTLE FOETAL GROWTH WEIGHTS



FAT SCORES

Fat Score	Fat Depth (P8 Site)	Fat Score	Fat Depth (P8 Site)
1	0-2 mm	4	13-22 mm
2	3-6 mm	5	23-32 mm
3	7-12 mm	6	32 mm plus

STOCK HISTORY

Vendor Bred— yes or no?
If no— where & when were stock purchased, how long on property.

BREEDING QUALITY

Should not be confused with condition - relates to the quality of the line being assessed.

EXCELLENT Top sires used, with high standards of selection and management, ie the very small percentage of REALLY first class stock.

VERY GOOD Quality sires used. Medium to heavy bone. Structurally sound. Strict selection criteria used. Will realise full potential.

GOOD Exhibiting some better characteristics of the breed, and showing evidence of some reasonable selection practices. Medium bone.

FAIR Limited potential. Lacking better characteristics of the breed. Light bone structure.

PLAIN Very poor quality, with structural or conformation faults. Limited future growth and fattening potential. Very light bone structure.

STORE CONDITION DESCRIPTION

Store stock condition scoring is given to expand the description.

FORWARD TO PRIME Fully cleaned up in coat; large percentage of line killable. High development of muscle.

FORWARD STORE Rising in condition/nutrition. Very light fat cover. Showing muscle potential. Cleaned up in coat.

STORE Nil to very light fat cover; bone structure just visible. Beginning to clean up in coat. Some filling out of muscle.

BACKWARD STORE Low but strong condition, nil fat, bone structure clearly visible; dry coat, sufficient strength to travel reasonable distances.

POOR Very low condition, nil fat; bone structure clearly visible; dry coat, sufficient strength to travel reasonable distances.

JOINING DETAILS

Not Station No deliberate access to bulls. Include any Chance
Mated Mating details

Station Had access to bulls for a joining period.
Mated Include whether continuously joined or nominate joining dates, and bull breed/s

AI Artificially Inseminated. Include date and bull details

Pregnancy Testing Include details on who tested, date and number in calf

Hip Height

> 150cm
131-150
110-130
<110

DRESSING %

MAJOR FACTORS AFFECTING DRESSING PERCENTAGE

- Liveweight
- Curfew
- Fat Cover
- Grazing Conditions
- Weaning
- Sex
- Breed
- Pregnancy Status

DELIVERY ADJUSTMENT %

Adjustment % required to allow for a curfewed weight at delivery when this varies from hours off feed at assessment.

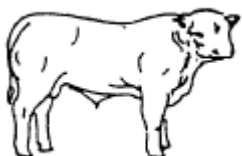
ASSESSOR COMMENTS

Assessor Comments are the one area of the assessment that varies depending on the target market. They are an opportunity to provide objective comments & further details on specific areas such as:

- Pregnancy Status
- Breeding
- Rising or Falling Nutrition
- Health
- Faults or not true to type
- Growth
- Potentially suitable markets

MUSCLE SCORES **Enter as a percentage*

A
VERY HEAVY
MUSCLE



B
HEAVY MUSCLE



C
MEDIUM MUSCLE



D
MODERATE MUSCLE



E
LIGHT MUSCLE

