

ASSESSOR REFERENCE CARD

SLAUGHTER CATTLE *(Current as at January 2020)*

STOCK CATEGORY

Stock Category	Dentition/Comments
Calf	Any sex
Vealer	Any sex. Still on cow until delivery, no permanent incisors. Use for Slaughter Stock.
Weaner	Any sex. No permanent incisors, further defined as Weaned or Unweaned. Use for Store Stock.
Yearling	Any sex. No permanent incisors
Steer	Castrated male, 1 or more permanent incisors
Heifer	Female, 1 but no more than 7 permanent incisors
Steers & Heifers	Mixed sex, 1 or more permanent incisors
Cow	Female, 8 permanent incisors
Cows & Calves	Females with calves at foot
Bull	Entire Male, 1 or more permanent incisors
Manufacturing	Mixed sex manufacturing cattle
<i>Note: Use the Stock Category appropriate for the oldest cattle in the lot</i>	

Note: When using dressed weight use 20kg increments with 40kg increments for liveweight

STANDARD DRESSED WEIGHT RANGES

Class	Weight kg	Class	Weight kg
4	Below 40	24	220-240
7	40-70	26	240-260
9	70-90	28	260-280
11	90-110	30	280-300
13	110-130	32	300-320
15	130-150	34	320-340
16*	150-160	36	340-360
18	160-180	38	360-380
20	180-200	40	380-400
22	200-220	42	Over 400

**Note: Weight Class (16) 10kg only*

FAT SCORES

Fat Score	Fat Depth (P8 Site)	Fat Score	Fat Depth (P8 Site)
1	0-2 mm	4	13-22 mm
2	3-6 mm	5	23-32 mm
3	7-12 mm	6	32 mm plus

CARCASE QUALITY GRADE

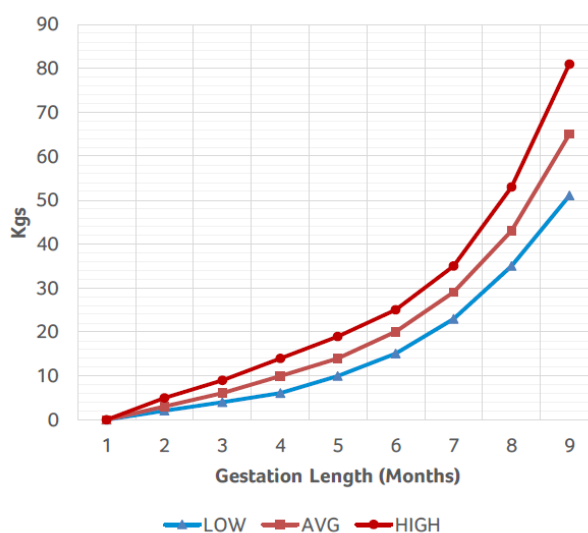
HQ1	High quality 1st grade
GAQ	Good average quality 1st grade
FAQ	Fair average quality 2nd grade
3MX	3rd grade manufacturing
CNR	Canner

TEMPERAMENT

To be assessed in the;	<i>*Enter as number of head. See page 6 of Cattle Assessment Form for full details.</i>
Yards, Crush & Paddock	
Docile	Settled and somewhat dull disposition. Cattle easily handled individually.
Quiet	Displaying a quiet & calm disposition. Handler in control at all times. May exhibit some stubbornness.
Slightly Stirry	Manageable but impatient. Clear signs of eagerness to return to mob. Reluctant to stand quietly; exits briskly.
Stirry	Out of control and jumpy. Large flight distance. Continuous tail flicking & bellowing in crush.
Aggressive	Aggressive behaviour, fearful, extreme agitation. May exhibit attack behaviour when handled alone. Exits crush frantically.

FOETAL GROWTH WEIGHTS

ESTIMATED CATTLE FOETAL GROWTH WEIGHTS



DRESSING %

MAJOR FACTORS AFFECTING DRESSING PERCENTAGE

- Liveweight
- Curfew
- Fat Cover
- Grazing Conditions
- Weaning
- Sex
- Breed
- Pregnancy Status

	LWT	HSCW	D%
0 hrs	400	200	50
3 hrs	390	200	52
12 hrs	372	200	54
24 hrs	367	200	55

Note: Above dressing percentages are rounded off.

DELIVERY ADJUSTMENT %

Adjustment % required to allow for a curfewed weight at delivery when this varies from hours off feed at assessment.

LIVEWEIGHT GAIN OR LOSS

Enter anticipated weight gain or loss following delivery, in kg/day.

Consideration factors: Grazing Conditions & Nutrition, Age & Weight, Weaning, Sex, Disease, Weather, Pregnancy, Evidence of Performance etc.

JOINING DETAILS

Not Station Mated (NSM)	No deliberate access to bulls. Include any Chance Mating details
Station Mated	Had access to bulls for a joining period. Include whether continuously joined or nominate joining dates, and bull breed/s
AI	Artificially Inseminated. Include date and bull details
Pregnancy Testing	Include details on who tested, date and number in calf

STOCK HISTORY

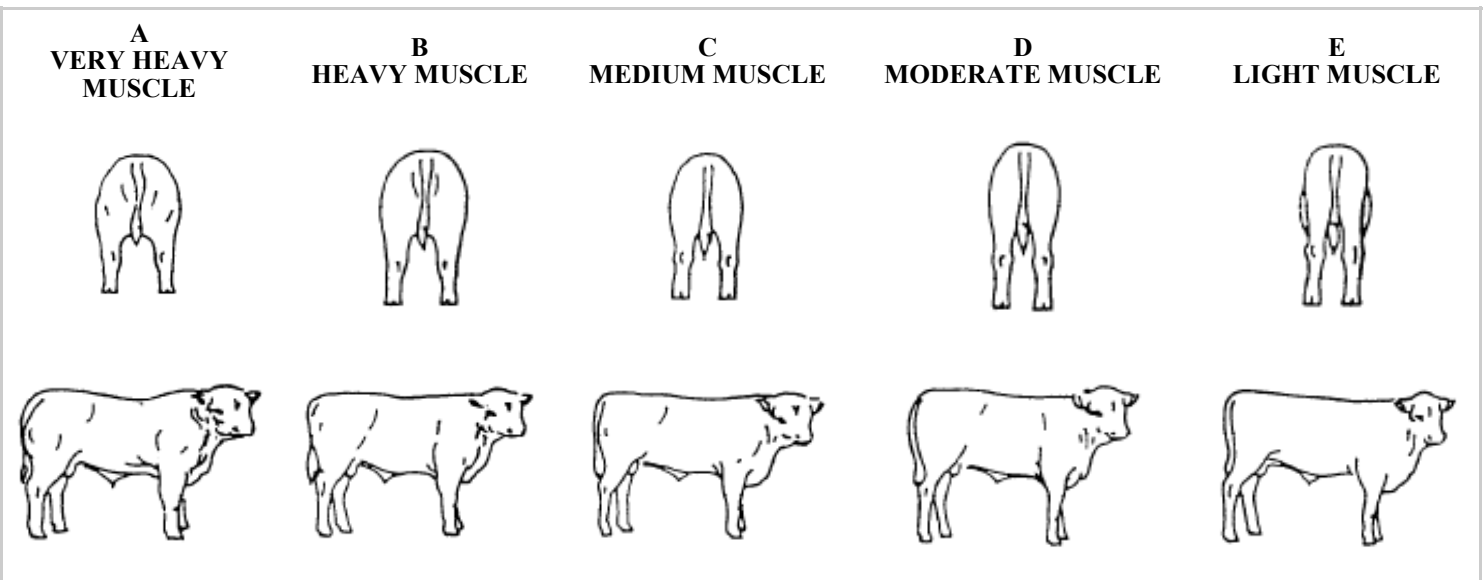
Vendor Bred— yes or no?
If no— where & when were stock purchased, how long on property.

ASSESSOR COMMENTS

Assessor Comments are the one area of the assessment that varies depending on the target market. They are an opportunity to provide objective comments & further details on specific areas such as:

- Carcase Quality
- Breeding
- Weight
- Muscling
- Fat Distribution
- Trade/Export Suitability

MUSCLE SCORES *Enter as a percentage



NOTES